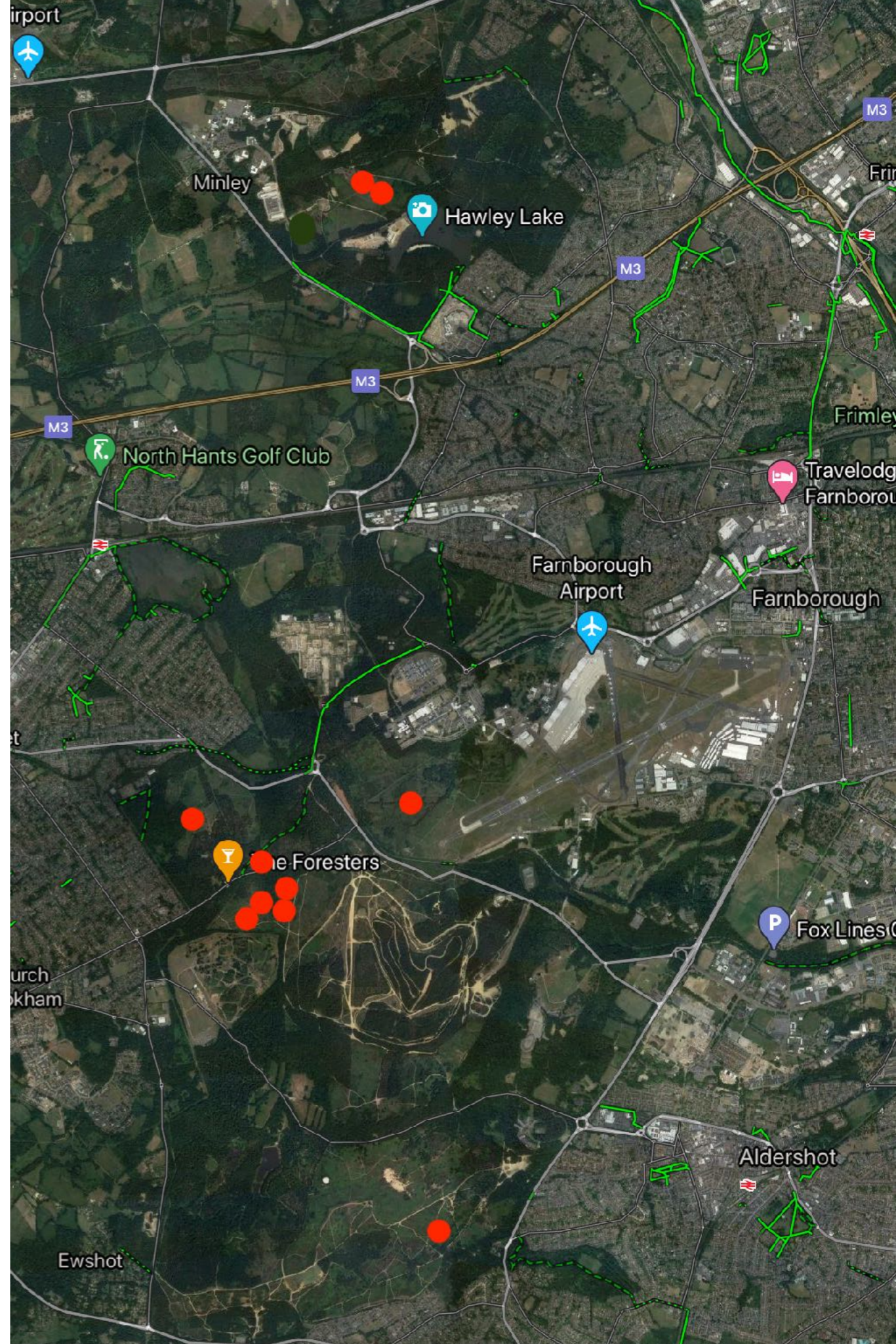


Sites Summary

Four areas of heathland within the the Rushmoor District have been found to support populations of Marsh Clubmoss. Within each area, a number of sub-sites have been monitored. Locations of these, along with 2020 population data is detailed in the table below, with additional information provided overleaf.

Table 1: Populations of Clubmoss Recorded in Rushmoor in 2020		
Site Name	Grid Ref	2020 Count
Li46 Hawley r	SU 8361 5804	87 plants with strobili
Li46b Hawley	SU 83650 57989	31 plants with strobili
Li47 Brocks Hill	SU 82839 52449	2 plants
Li47 Old Scrape ^a	SU 82861 52482	104 plants with strobili
Li47 South Strip ^{b c}	SU 83040 52507	129 plants with strobili
Li47 Northern Strip	SU 83055 52589	9 plants with strobili
Li47 Crookham Common (Central)	SU 82330 53160	0 plants
Li47b Crookham Common (Gelvert Bottom)	SU 82787 52806	0 plants
Li47g Eelmoor Heath	SU 8392 5326	12 plants, no strobili
Li48 (a - f) Aldershot Common	SU 84240 50000 SU 84260 50030 SU 84290 50050 SU 84310 50040 SU 84290 50040 SU 84300 50030	0 plants





Li46 Hawley r

SU 8361 5804

2020: 87 plants with strobili scattered along a 2.5m length of old track. Old track closing up through establishment of Purple Moor-grass *Molinia caerulea* and heather.

2018: 83 plants in a narrow depression.

2015: 2000+ plants in an old disused track and nearby on or adjacent to mown firebreak that also has low use of as a track.

Actions: Area well-vegetated with encroaching *Molinia caerulea* and heather, which is slightly hemming in plants to small patches of bare ground. Further management recommended, using vehicle track compaction to open up new areas of bare ground.



Li46b Hawley

SU 83650 57989

2020: 31 plants with strobili along 3m stretch on northern edge of old scrape.

2018: A total of 29 individuals on northern edge of existing scrape.

2015: 5 plants in good, large scrape.

Actions: No further management required in near future due to good amount of bare ground and associate species.